

Exclaimer® Signature Management Outlook Edition

Getting Started Guide

Version 1

Document Information

Prepared by: Exclaimer

Date: 04 November 2020

Legal Information

Copyright © Exclaimer Ltd. 2020.

The information in this document is subject to change without notice. Exclaimer Ltd assumes no responsibility for any errors that may appear in this document. Unless otherwise noted, the example companies, organizations, products, domain names, e-mail addresses, logos, people, places and events depicted herein are fictitious and not associated with any real company, organization, product, domain name, e-mail address, logo, person, place or event.

Exclaimer Signature Manager Outlook Edition and other Exclaimer devices are either registered trademarks or trademarks of Exclaimer Ltd in the United Kingdom and/or other countries. Exclaimer may have trademarks, copyrights or other intellectual property rights covering subject matter in this document. All other company and product names are acknowledged as being the trademarks or registered trademarks of their respective companies.

Unless expressly provided in a written license agreement from Exclaimer Ltd, the furnishing of this document does not give you any license to these trademarks, copyrights or other intellectual property.

This document was last updated: November 2020.

Document Control

Document Name: Signature Manager Outlook Edition - Getting Started Guide

Change History

Version	Date	Details of change
1	04/11/2020	Released

Contents

1	Overview	6
1.1	Document Scope	6
1.2	Intended Audience	6
1.3	Reference Documentation	6
2	Introduction to Signature Manager Outlook Edition	7
2.1	Purpose	7
2.2	Server requirements	7
2.2.1	Hardware	7
2.2.2	Software	7
2.3	Client (ExSync.exe) requirements	8
2.3.1	Hardware	8
2.3.2	Software	8
3	Working with Signature Manager Outlook Edition	9
3.1	Before you start	9
3.2	How it works	9
3.3	Key benefits	10
3.4	Licensing	10
3.4.1	Licensing information	11
4	Installing Signature Manager Outlook Edition	12
4.1	Installation process	13
4.2	File Locations	14
5	Downloading Signature Manager Outlook Edition	15
5.1	Installation Wizard	15
5.2	Setup Wizard	19
5.2.1	Configuring permissions	26
6	Setting up ExSync	29
6.1	ExSync Agent	29
6.2	Setting the update mode for ExSync	29
6.3	Ensuring that ExSync Runs Automatically	31
6.3.1	Deploying via a Logon Script	31
6.3.2	Deploying via Group Policy Object (GPO)	32
7	Remote Deployment	35
7.1	How it works	36
7.2	The Remote Deployment folder	36
7.2.1	Folder Permissions (Easy Method)	36
7.2.2	Folder Permissions (Secure Method)	36
7.3	Remote Deployment Timings	37
7.4	Changing an Existing Remote Deployment Folder	38
8	Command Line Installation	39
8.1	Required Preparation	39
8.2	Supported Command Line Options	39
9	Uninstalling Signature Manager Outlook Edition	40

9.1	Preparation	40
9.2	Running the Uninstall Process	41

1 Overview

1.1 Document Scope

This document describes how to use install and configure Exclaimer Signature Manager Outlook Edition.

1.2 Intended Audience

This document is intended for use as a reference by Exclaimer trial customers.

1.3 Reference Documentation

For additional information about the Exclaimer Signature Manager Outlook Edition, please refer to the following Exclaimer documentation:

Title	Document Type
Exclaimer Signature Manager Outlook Edition	User Manual/Online Help

2 Introduction to Signature Manager Outlook Edition

Before you begin to start installing then configuring the Signature Manager Outlook Edition, make sure you have read this chapter thoroughly and you are aware of all the requirements.

2.1 Purpose

Exclaimer Signature Manager Outlook Edition allows you to create great looking, professional signatures centrally (including company branding, legal disclaimers and promotional content) for use in all email messages sent from Microsoft Outlook and Microsoft Outlook Web Access (OWA).

2.2 Server requirements

2.2.1 Hardware

Item	Minimum Requirements	Recommended Requirements
CPU	x86 or x64 architecture-based computer. Intel Itanium family IA64 processor are not supported.	x86 or x64 architecture-based computer. Intel Itanium family IA64 processor are not supported.
Memory	2GB	4GB
Disk Space	350MB	500MB
Screen Resolution	1024x768 pixels	1152x864 or higher

2.2.2 Software

Item	Minimum Requirements
Operating Systems	Windows Server 2012 Windows Server 2012 R2 Windows Server 2016 Windows Server 2019
Microsoft .NET Framework	Microsoft .Net Framework 4.0 or 3.5.1
Active Directory	Domain and Forest functional level of Windows Server 2003 and above

2.3 Client (ExSync.exe) requirements

2.3.1 Hardware

Item	Minimum Requirements	Recommended Requirements
CPU	x86 or x64 architecture-based computer. Intel Itanium family IA64 processor are not supported.	x86 or x64 architecture-based computer. Intel Itanium family IA64 processor are not supported.
Memory	512MB	1GB
Disk Space	20MB	20MB

2.3.2 Software

Item	Minimum Requirements
Operating Systems	Windows Server 2012 Windows Server 2012 R2 Windows Server 2016 Windows Server 2019
Microsoft Outlook	Outlook 2010 x86 and x64 (including all service pack levels) NOTE: Support ends on 13 Oct 2020 Outlook 2013 x86 and x64 Outlook 2016 x86 and x64
Outlook Web Access (OWA) \ Outlook Web Apps	Outlook Web Apps 2010 NOTE: Support ends on 13 Oct 2020 Outlook Web Access 2013 Outlook Web Access 2016 Outlook Web Apps 2019

3 Working with Signature Manager Outlook Edition

3.1 Before you start

This chapter briefly describes:

[How Exclaimer Signature Manager Outlook Edition works](#)

[Key Benefits of Exclaimer Signature Manager Outlook Edition](#)

[Licensing information](#)

3.2 How it works

Within Exclaimer Signature Manager Outlook Edition, a signature is not just a block of contact information for the message sender. In this context, a signature is comprised of three distinct parts:

- Signature (business card content)
- Campaign (sales / promotional content)
- Disclaimer (legal / corporate) content

These parts are defined in separate Outlook policies which are combined (when given criteria are met) to form the final signature. An Outlook policy can be defined as a set of rules which are used to control how signatures are applied to email messages. It includes:

- The policy type: signature, campaign or disclaimer.
- The circumstances under which the policy should be triggered (using conditions, exceptions, date range and next policy options).
- Signature content (using templates).
- How the signature should be deployed.

You can create as many policies as required. For example, in a scenario where you want to apply a different campaign content for each department within your organization - you create one signature and one disclaimer policy for all users, but a separate campaign policy for each department.

In certain scenarios, some users may not require any campaign material at all. For this, you define a signature where only signature and disclaimer content are applied.

NOTE: When Exclaimer Signature Manager Outlook Edition is installed, and the appropriate deployment options are set then Exclaimer Signature Manager Outlook Edition keeps running in the background. Any new or updated signatures are copied to a specified deployment folder (the network share) then deployed to users automatically.

So, when a user chooses to create a new email message (or if they choose to reply to/forward a message), they will see all applicable signatures in their message.

If more than one signature is applicable, then the last one which was processed is used. But, you can right-click the signature to view/select from a list of additional signatures. If required, you can amend the content of a signature within the message.

3.3 Key benefits

Some key benefits of Exclaimer Signature Manager Outlook Edition are:

- Make use from a library of professionally designed signature, campaign and disclaimer templates. Templates are created and edited using an intuitive template editor – this will be familiar to anyone who has worked with Microsoft Outlook.

Templates are created in HTML, RTF and Plain Text formats, with an instant preview feature so you can, at a glance, see how your template will be displayed in email messages. You can also include tables, images, RSS feeds and dynamic Active Directory fields. This means that you can be as creative as you want to be!

- Apply smart, sophisticated signatures throughout your organization. This will help create a professional, consistent brand image.

What happens if users define their own signatures locally, using standard options in Microsoft Outlook?

Exclaimer Signature Manager Outlook Edition allows you to control Outlook mail format settings for all users so that every new, replied or forwarded email complies with your organization's house style. This is achieved with Outlook mail format policies; with this type of policy you can control:

- Message format options: control the default format for message composition and preferred editors to be used.
 - Message font options: enforce your organization's house style by specifying default font settings for new messages, together with replies, forwarded messages and plain text email.
 - General Outlook options: choose whether any signatures or stationery that a user might have set locally are retained or overwritten by Exclaimer Signature Manager Outlook Edition.
- Once you have defined your templates and policies, you don't need to worry about complicated testing processes. Exclaimer Signature Manager Outlook Edition includes an intuitive policy tester, which simulates the generation of signatures for given Outlook users - this allows you to view if the policies defined are correct.

3.4 Licensing

Our aim is to get you working with Exclaimer software as quickly as possible, with minimal restrictions. And because of this we have implemented a flexible licensing policy.

If you have installed Exclaimer software for the first time, you can use it for five days without any form of registration. After five days, you are prompted to register for a 30-day trial. During the trial period, all signatures are appended with the following text:

This Signature was created by Exclaimer Signature Manager Outlook Edition.

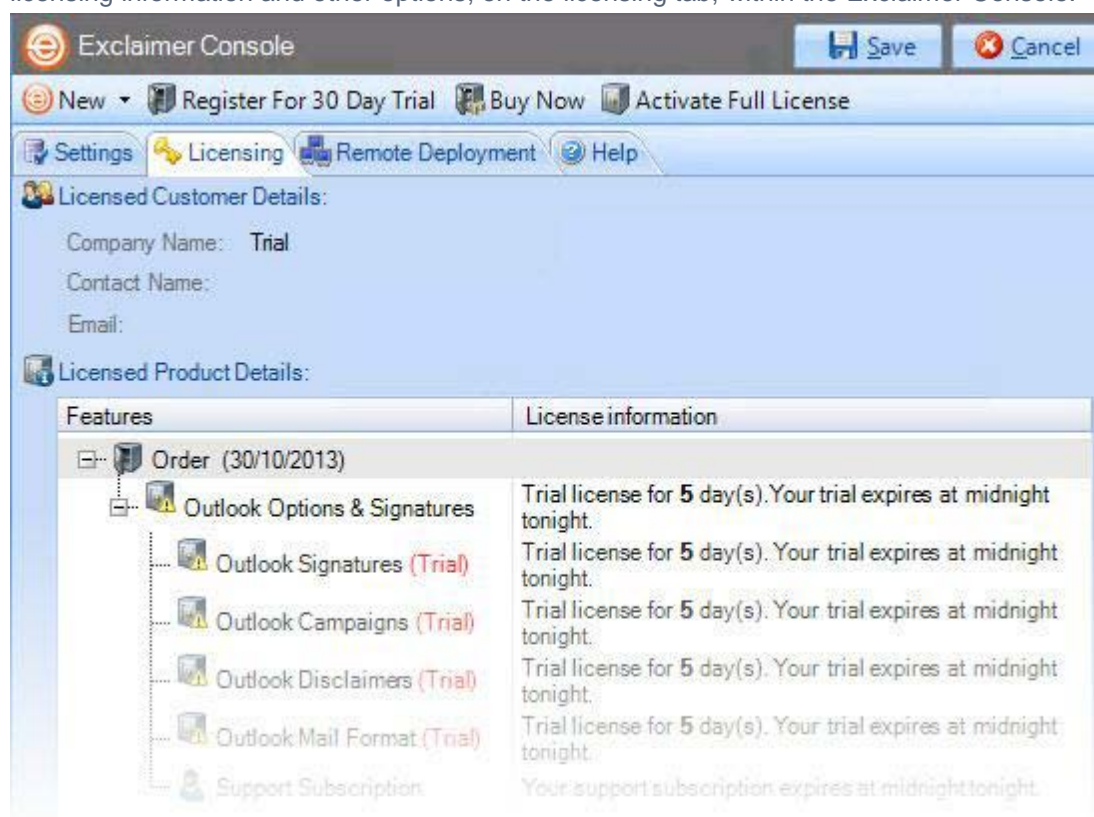
This text is only added when signatures are generated within the trial period; once the license is activated the message is removed.

Once you have completed the trial period, you can either:

- Purchase the product from the [Exclaimer website](https://www.exclaimer.com) or by contacting the Exclaimer sales team (sales@exclaimer.com).
- Contact the Exclaimer sales team to extend your trial.

3.4.1 Licensing information

Once you have successfully installed Exclaimer Signature Manager Outlook Edition, you can view the licensing information and other options, on the licensing tab, within the Exclaimer Console:



You can access this by selecting the Exclaimer branch of the console tree, then click the **Licensing** tab or select **Licensing** from the **Actions** pane.

4 Installing Signature Manager Outlook Edition

The installation process for Exclaimer Signature Manager Outlook Edition is straightforward. It includes an installation wizard to copy required files and most of the setup is done behind the scenes.

Once the installation is complete, you may need to perform a few additional steps depending upon how you want to deploy signatures from Exclaimer Signature Manager Outlook Edition to your Outlook users.

There are two possible scenarios to consider:

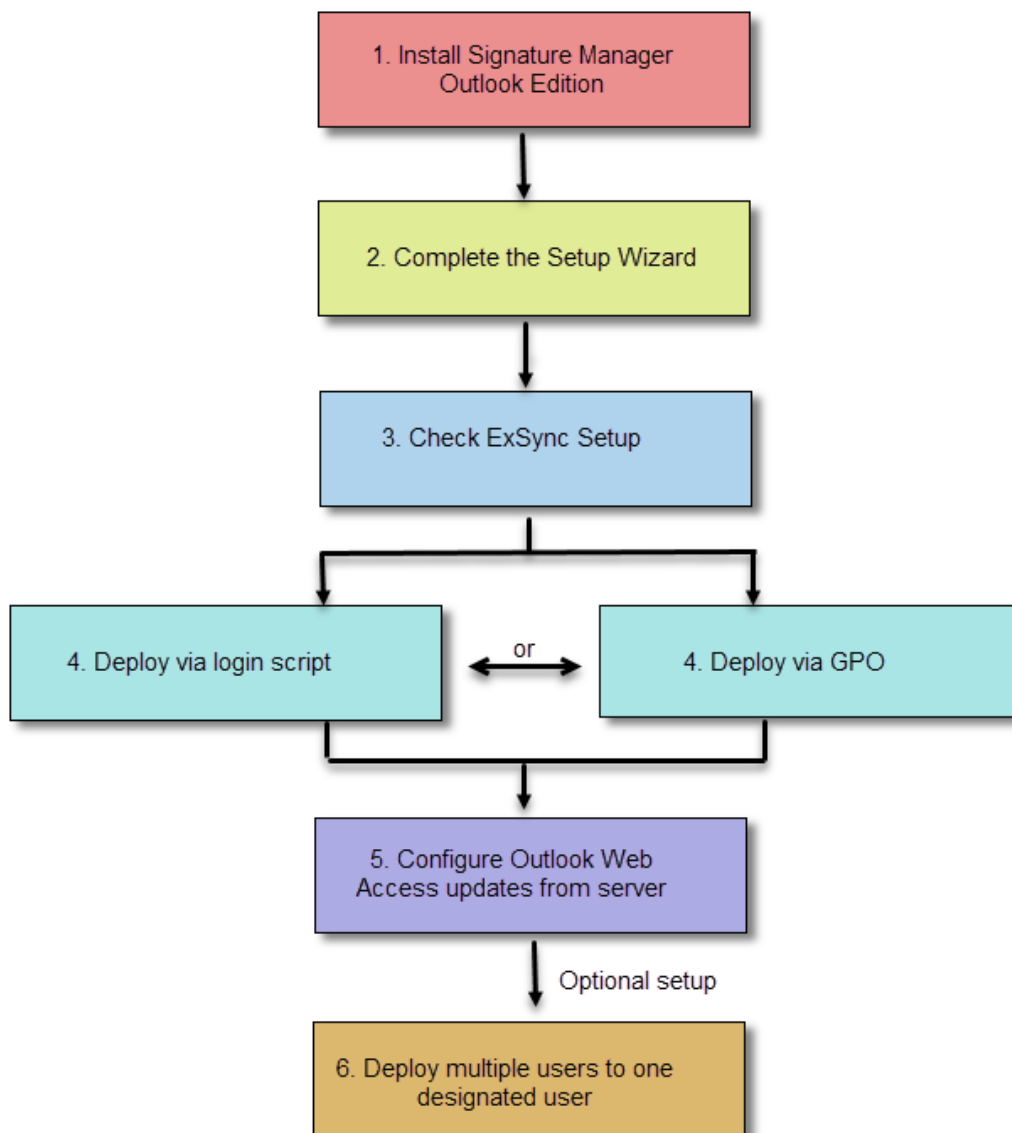
- Within your organization most users connect to your Exchange/mailbox via MS Outlook/OWA. In this situation, set deployment (via a .BAT or a VBS file) as a [logon script](#) or a [Group Policy Object \(GPO\)](#).

-or-

- Within your organization most users typically use OWA and rarely log on to your domain via Microsoft Outlook. In this situation, set deployment (via a .BAT or VBS file) as a [logon script](#) or a [Group Policy Object \(GPO\)](#). This sets ExSync for the relatively few users who log on to your domain. Then, you need to configure OWA settings to use server updates, as detailed in the main user guide for Exclaimer Signature Manager Outlook Edition.

4.1 Installation process

The following diagram summarises the installation and setup process for Exclaimer Signature Manager Outlook Edition (it includes both the deployment process we described above):



- Steps 1 to 4 are mandatory (irrespective of how most users access their email): The steps are described in this document.
- Step 5 is only required if most people use OWA, or if you are using Exchange 2013 or Microsoft 365.
- Step 6 is entirely optional. For more information, please see our knowledge base article [How do I deploy signatures to remote users?](#)

Information regarding all these steps can be found in the main user guide for Exclaimer Signature Manager Outlook Edition.

CAUTION!

The installation process makes the following changes to your system:

- The Exclaimer Outlook Settings Connector Service is installed.
- The Exclaimer Signature Manager Outlook Edition Configuration Service is installed.
- The Exclaimer Signature Manager Outlook Edition Remote Deployment Service is installed.

4.2 File Locations

During the installation process, you need to specify a destination folder into which program files will be installed.

The default folder is C:\Program Files\Exclaimer Ltd\Signature Manager.

In addition to program files, a number of configuration files are copied to your system. The location of these files varies according to operating system, as summarized below:

Operating System	File Location
Windows Server 2012 Windows Server 2012 R2 Windows Server 2016 Windows Server 2019	\Documents and Settings\All Users\Application Data\Exclaimer Ltd\Signature Manager
Windows Server 2012 Windows Server 2012 R2 Windows Server 2016 Windows Server 2019	\ProgramData\Exclaimer Ltd\Signature Manager

5 Downloading Signature Manager Outlook Edition

The Exclaimer Signature Manager Outlook Edition installation file is named as `setup.exe` and can be [downloaded from the products page](#) of the [Exclaimer website](#) (www.exclaimer.com).

Once downloaded, run the `setup.exe` on the computer from which you want to manage your signatures.

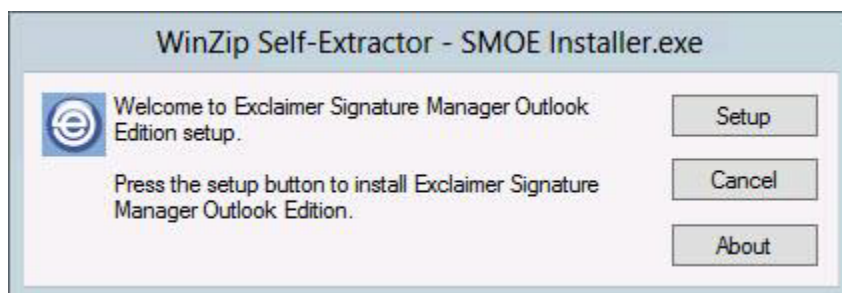
NOTE: To obtain the required MSI installation file, please contact Exclaimer Support.

5.1 Installation Wizard

The installation process for Exclaimer Signature Manager Outlook Edition is completed using a familiar 'wizard' approach to guide you through each process, step-by-step. This process includes the Exclaimer license agreement and copies files to your preferred destination folder. Once complete, you can use the application for five days, after which you must register for a 30-day trial to continue using Exclaimer Signature Manager Outlook Edition.

To complete the installation wizard, follow the steps below:

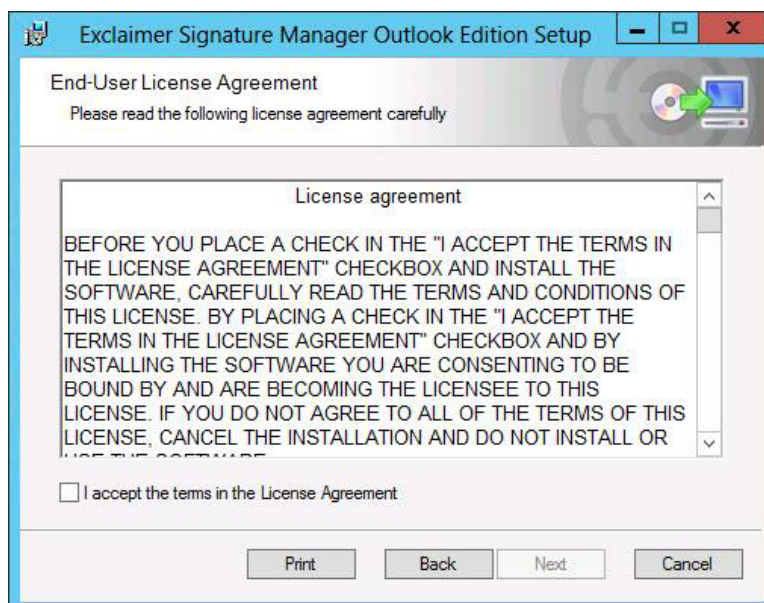
1. Double-click the `setup.exe` to start the installation process. The WinZip Self-Extractor -SMOW



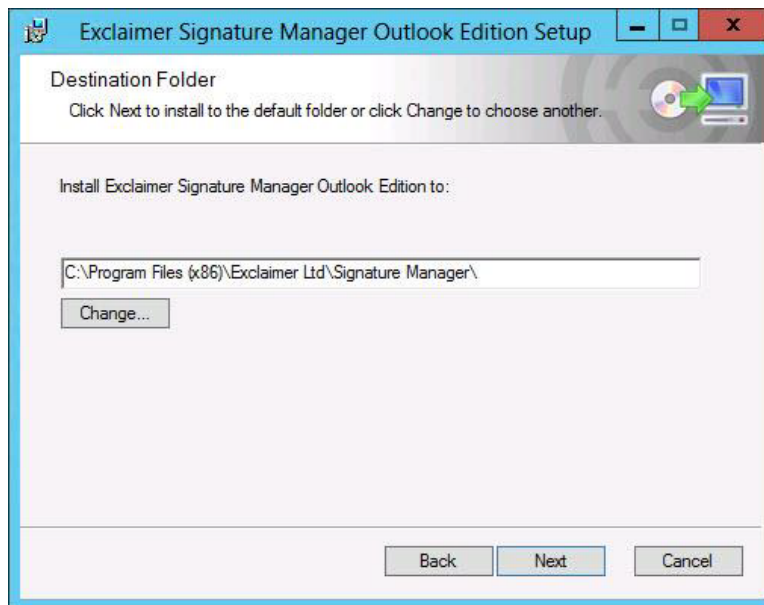
2. Click **Setup** to display a Welcome message:



3. Click **Next** to view the End-User License Agreement:

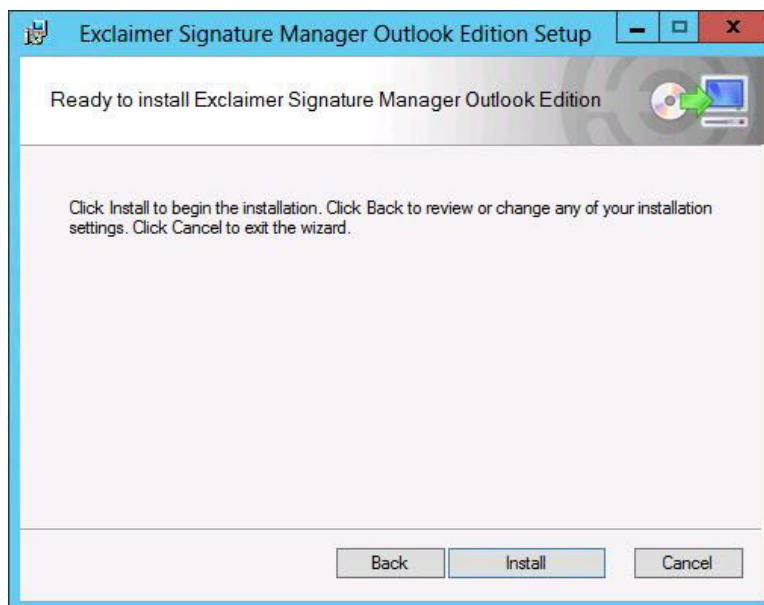


4. Having read the license agreement, select **I accept the terms in the License Agreement** then click **Next** to specify a destination folder for installed files:



If required, you can accept the default folder or click **Change** to specify a new folder location.

5. Click **Next** to proceed then click **Install** to start the installation process.



6. You can see the installation progress on the screen and the final confirmation is displayed upon completion:



7. Click **Finish** to close the wizard.

CAUTION! If you are installing Exclaimer Signature Manager Outlook Edition for the first time, the [Setup wizard](#) is launched. You must complete the Setup wizard to create your first policy and get started with Exclaimer Signature Manager Outlook Edition.

5.2 Setup Wizard

Once you have successfully completed the [installation wizard](#) for the first time, the setup wizard is launched automatically. The setup wizard takes you through the basic setup required to create your first signature policy and get started with Exclaimer Signature Manager Outlook Edition.

To complete this wizard, follow the steps below:

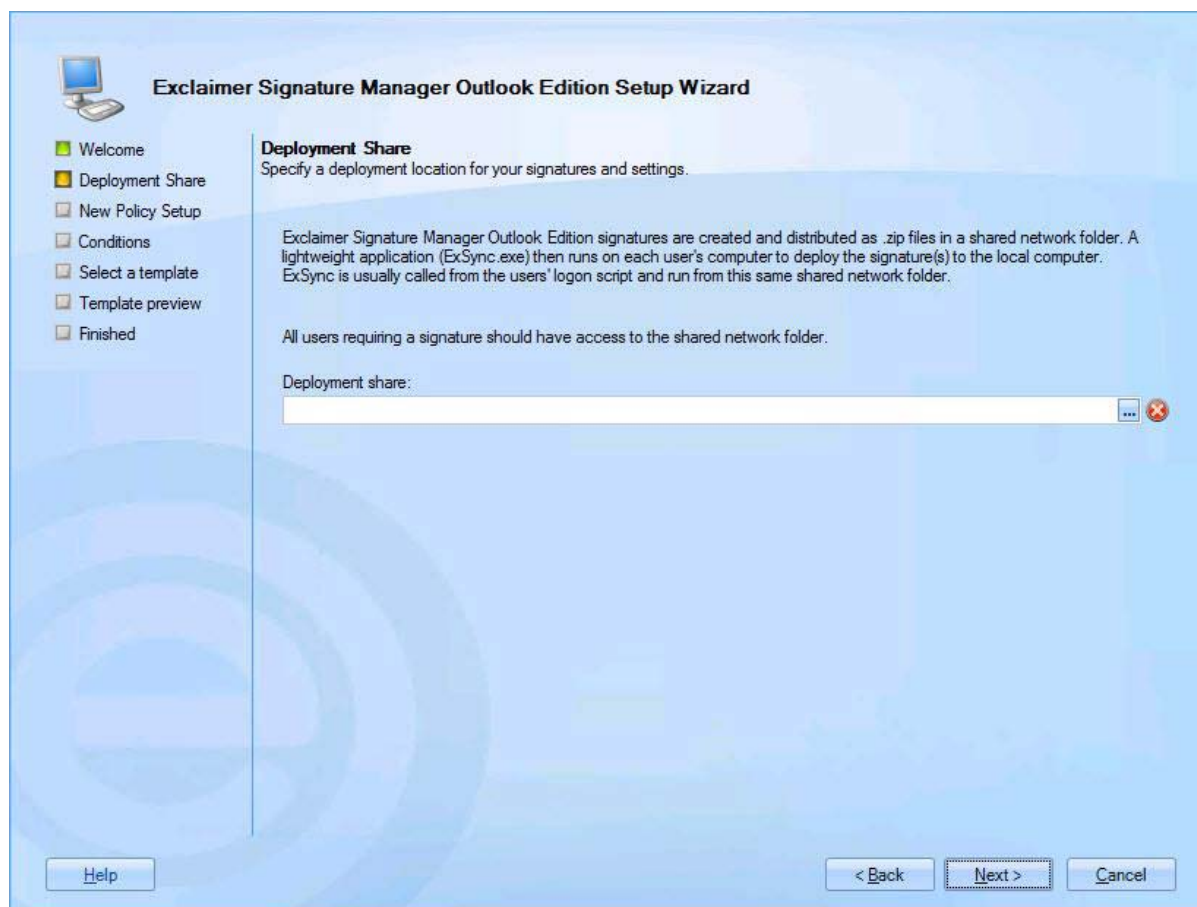
1. The first stage of the setup wizard displays summary information about the process:



2. Click **Next** to move to the next stage and set a deployment share.

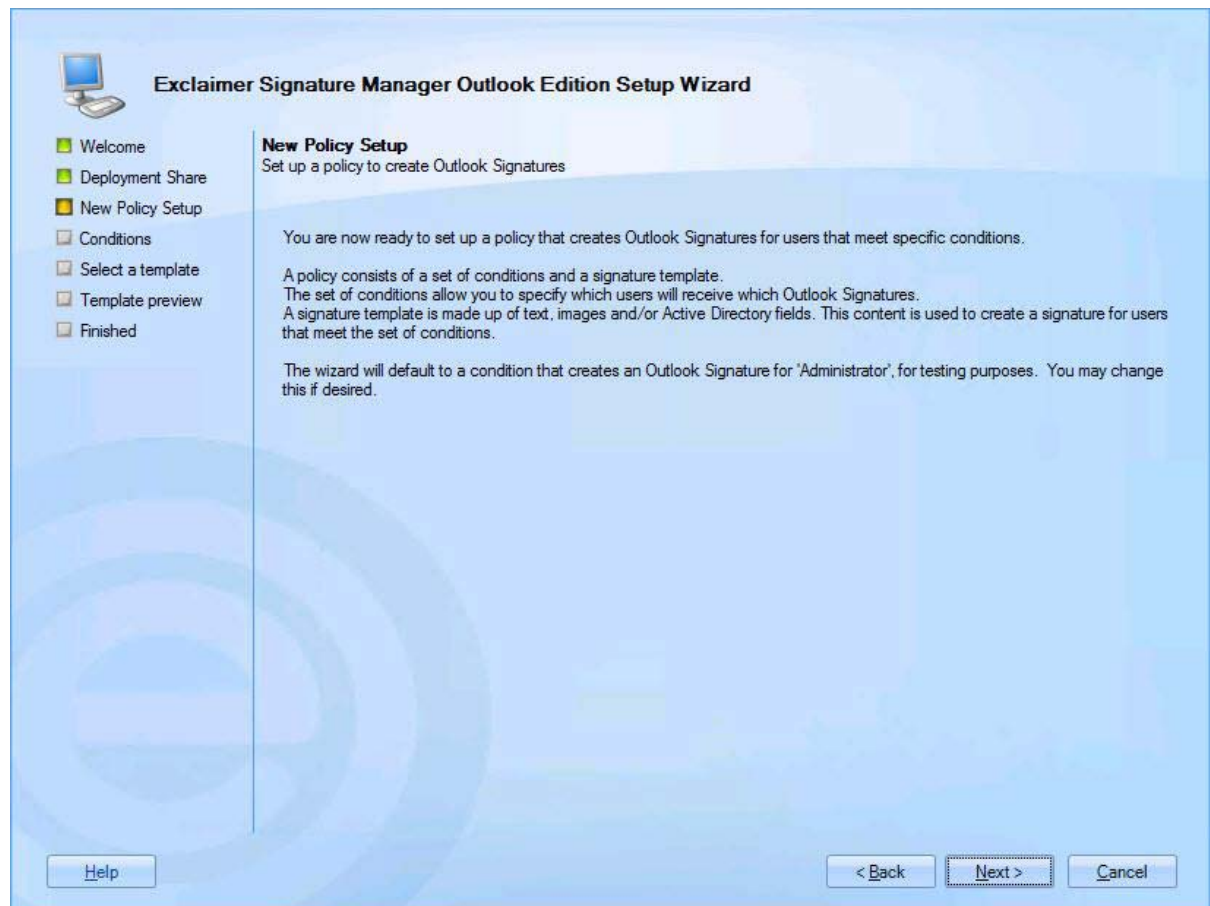
This folder is primarily used to store signatures (as generated by Exclaimer Signature Manager Outlook Edition) in the form of a zip file, and for users to access the [ExSync agent](#).

CAUTION! When you select a deployment share you need to ensure that the specified drive has enough disk space to store signatures for all users in your organization. Signatures are generated according to a specified update interval and stored in the deployment share. Therefore, if you have 1000 users, 1000 ZIP files will be created and stored.



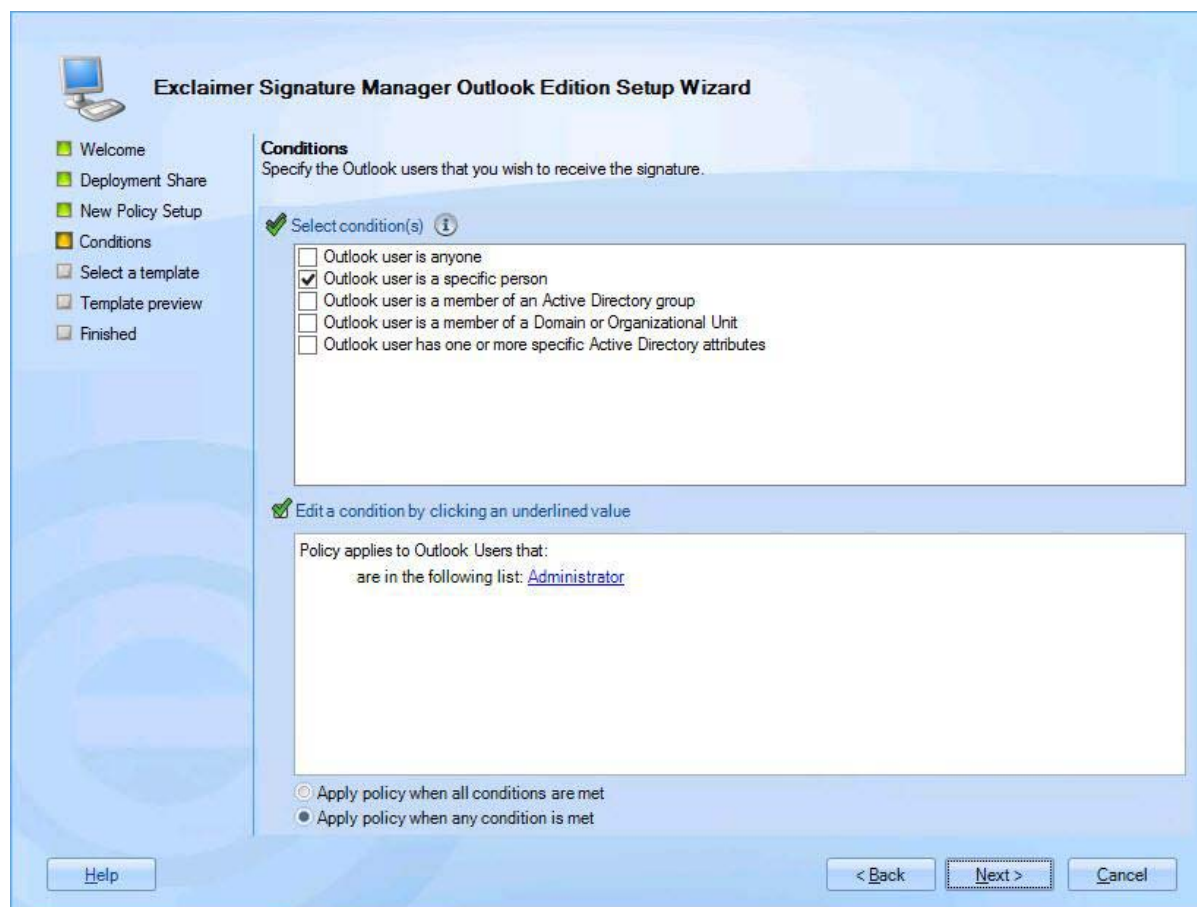
CAUTION! Local paths (C:\, F:\, and so on) are not supported for deployment. You must specify a UNC path - [\\servername\networksharedfoldername](#). See [Configuring Permissions](#) for more information on how to configure Share and Security permissions for the deployment Share folder.

3. Click **Next** to proceed to the next stage and review the setup required for your first policy:



4. Click **Next** to set conditions for your first policy.

You can update this policy any time after the installation, so if you are not sure what to set now, simply accept the default conditions and continue:



5. Click **Next** to move to the next stage and select a template to associate with your first policy.

A number of standard templates are provided but you can update your selection any time after the installation. If you are not sure what to select at this point, simply accept the default and continue:

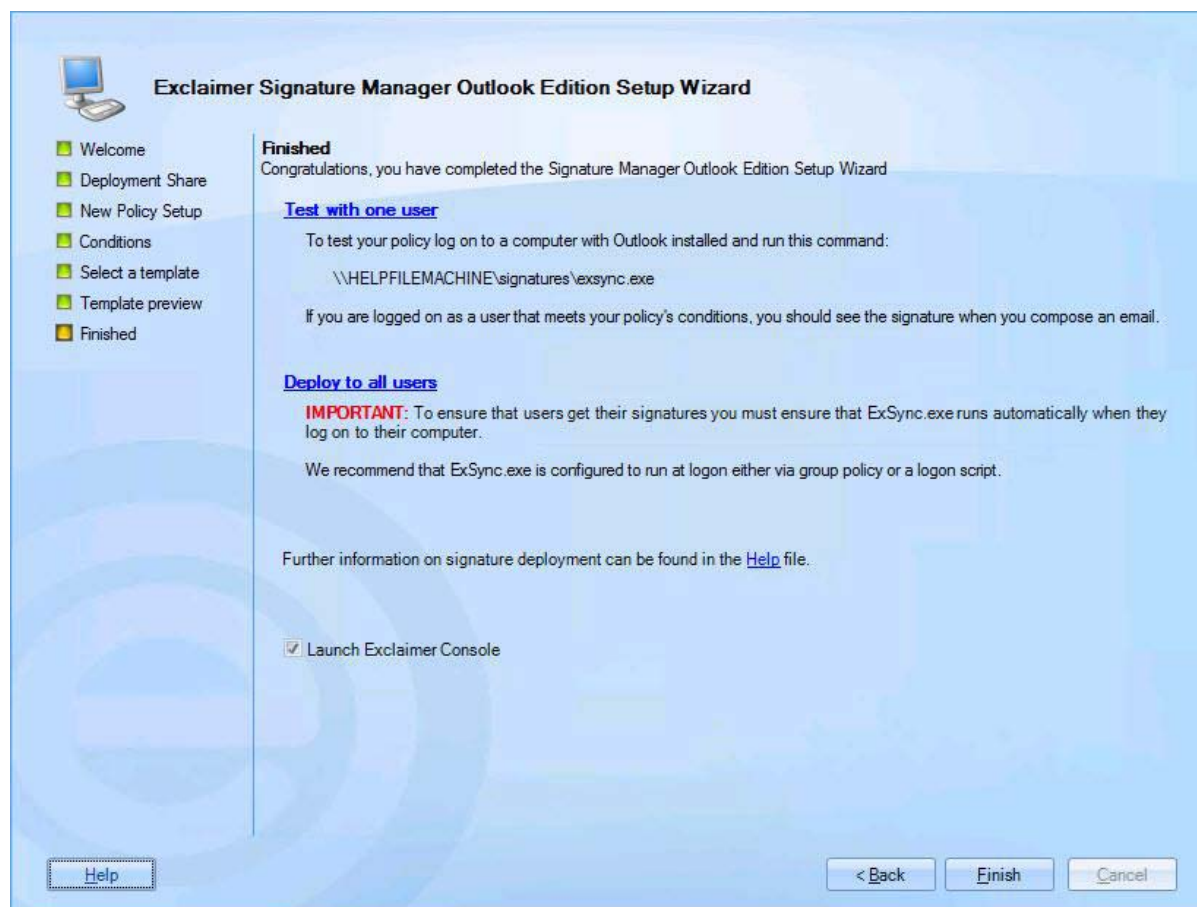


6. Click **Next** to preview the selected template, to see how it will be displayed on the signature:



If the selected template contains Active Directory fields, the preview may vary depending on which user is associated with the policy (as determined by conditions set in step 4). If required, you can select a specific user via the display data from the user option.

7. Click **Next** to review the key settings:



8. Click **Finish** to exit and launch Exclaimer Signature Manager Outlook Edition. From here, you can check/set additional deployment options (see [setting up ExSync](#), [deploying via a logon script](#), [deploying via GPO](#)).

Further configuration options are detailed in the main user guide for Exclaimer Signature Manager Outlook Edition.

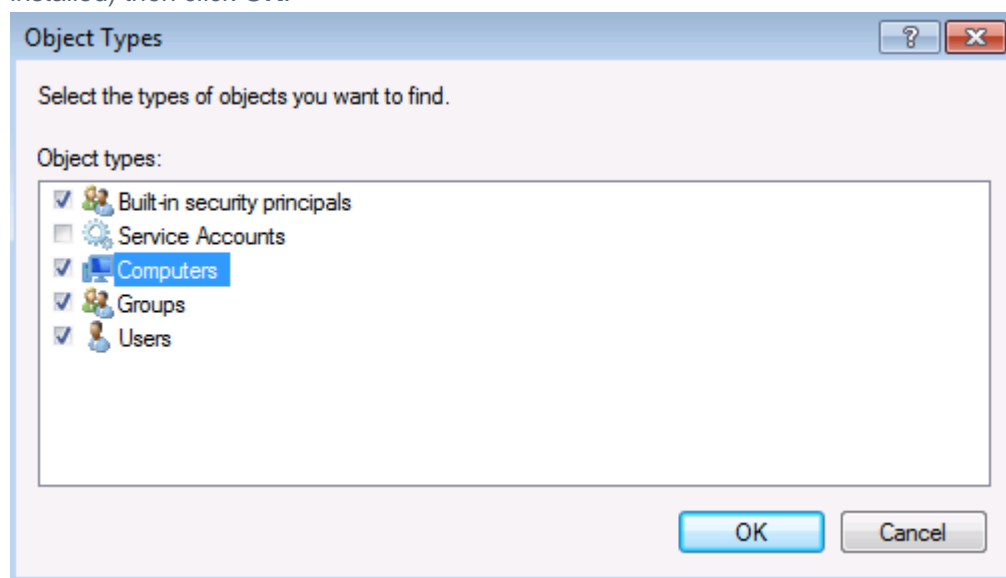
NOTE: Once the setup is complete, a signature deployment policy is automatically created. This policy determines how signatures are updated, where they are shared (the deployment folder specified) and for which users. By default, the signature deployment policy applies to all users, but you can add further policies if you have more complex requirements.

5.2.1 Configuring permissions

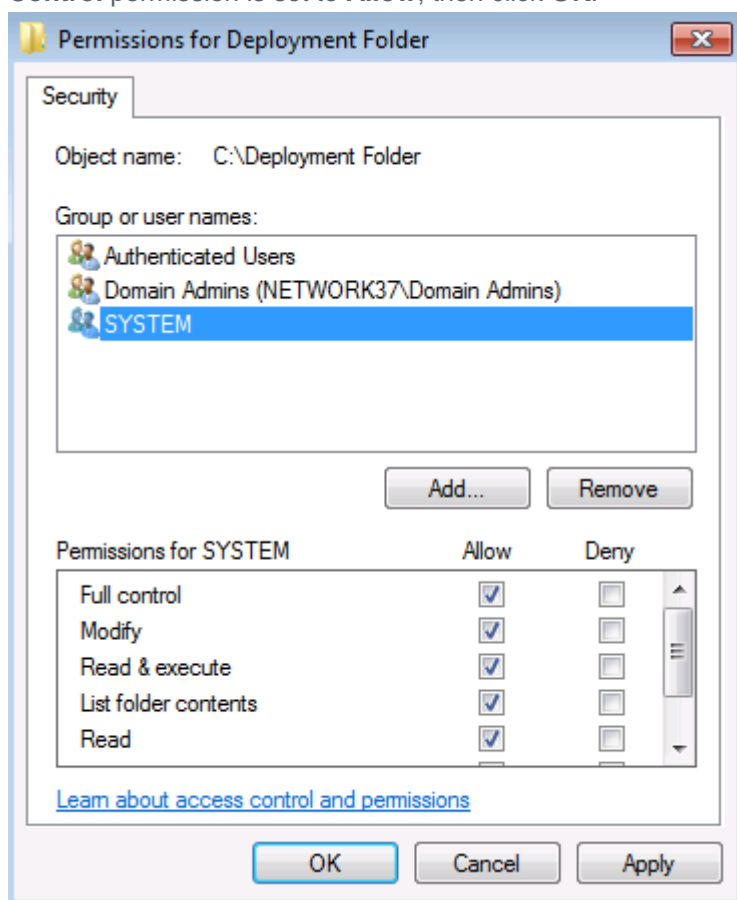
To configure the **SHARE** and **SECURITY** permissions for the deployment share folder:

1. Log on to the computer where the folder you have specified as the Deployment Share is physically located. Ensure you log on with an account that has administrative privileges to that folder.
2. In Windows Explorer, navigate to the folder specified as the Deployment Share.
3. Right-click the folder, click **Properties** then click the **Security** tab.
4. Click **Edit...** then click **Add...** (There is no **Edit** button on Windows XP or Windows 2003).
5. Type *Authenticated Users*. Click **OK**.
6. In the **Permissions for Authenticated Users** box, ensure the **Read & Execute**, **List Folder Contents** and **Read** permissions are set to **Allow**.
7. Click **Add...**
8. Type *Domain Admins* then click **OK**.
9. In the **Permissions for Domain Admins** box, ensure the **Full Control** permission is set to **Allow**.
10. Click **Add...**
11. If the folder is located on the same computer where Signature Manager has been installed, type *SYSTEM* then click **OK**.

If the folder is located on a different computer from where Signature Manager has been installed, click **Object Types**, enable the **Computers** object type, click **OK**, type *[ComputerName]* (where ComputerName is the name of the computer where Signature Manager has been installed) then click **OK**.



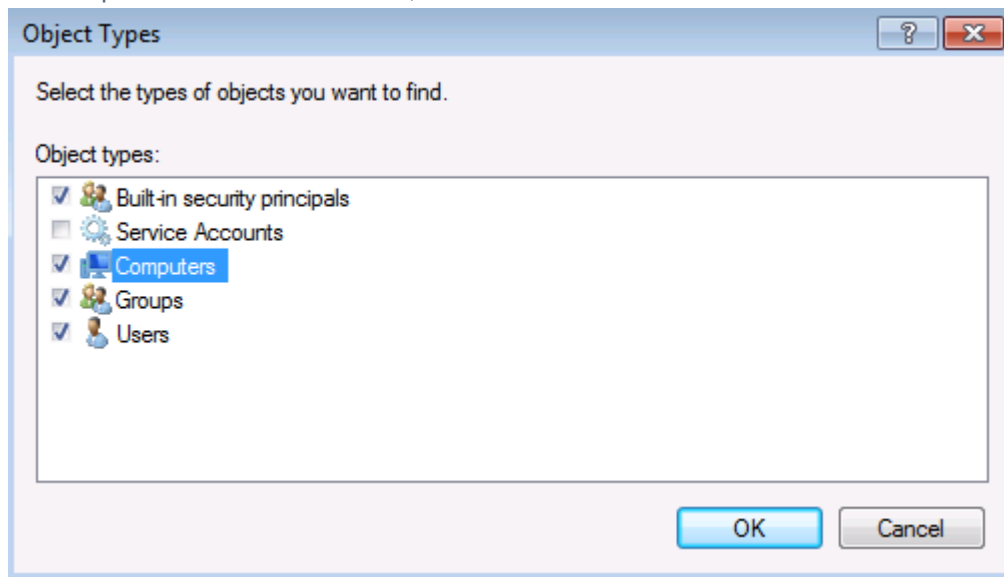
12. In the **Permissions for SYSTEM** or **Permissions for [ComputerName]** box, ensure the **Full Control** permission is set to **Allow**, then click **OK**.



13. Click the **Sharing** tab, click **Advanced Sharing...**, ensure the **Share This Folder** option is enabled then click **Permissions**
(There is no Advanced Sharing button on Windows XP or Windows 2003).
14. Click **Add...**, type *Authenticated Users* then click **OK**.
15. In the **Permissions for Authenticated Users** box, ensure the **Read** permission is set to **Allow**.
16. Click **Add...**, type **Domain Admins** then click **OK**.
17. In the **Permissions for Domain Admins** box, ensure the **Full Control** permission is set to **Allow**.
18. Click **Add...** if the folder is located on the same computer where Signature Manager has been installed, type *SYSTEM* then click **OK**.

If the folder is located on a different computer from where Signature Manager has been installed, click **Object Types**, enable the **Computers** object type, click **OK**, type *[ComputerName]* (where ComputerName is the name of the computer where Signature Manager has been installed) then click **OK**.

19. In the **Permissions for SYSTEM** or Permissions for *[ComputerName]* box, ensure the Full Control permission is set to **Allow**, then click **OK**.



20. Click **OK** or **Close** on all remaining dialog boxes, until the main Properties window of the folder has been closed.

The deployment folder permissions required for Signature Manager are now configured successfully. Signature Manager will validate the permissions and attempt to deploy signatures at the next update interval or when changes to the configuration are next saved.

6 Setting up ExSync

To deploy signatures from Exclaimer Signature Manager Outlook Edition to each user's computer, an agent named ExSync needs to be running on each client machine. ExSync is designed to update Outlook signatures regularly, using minimal processing / memory resources.

You can automate the process of running ExSync on client machines using a [Group Policy Object \(GPO\)](#) or a [logon script](#). Users will not be aware of the agent running during the normal operation of their machine.

NOTE: For more information on creating or amending Group Policy Objects go to the [Microsoft TechNet website](#) and search for Group Policy Object.

6.1 ExSync Agent

When the [installation process](#) and the [setup wizard](#) is complete, the ExSync agent is automatically copied to your specified deployment share, from where it is run. However, to use ExSync, you need to:

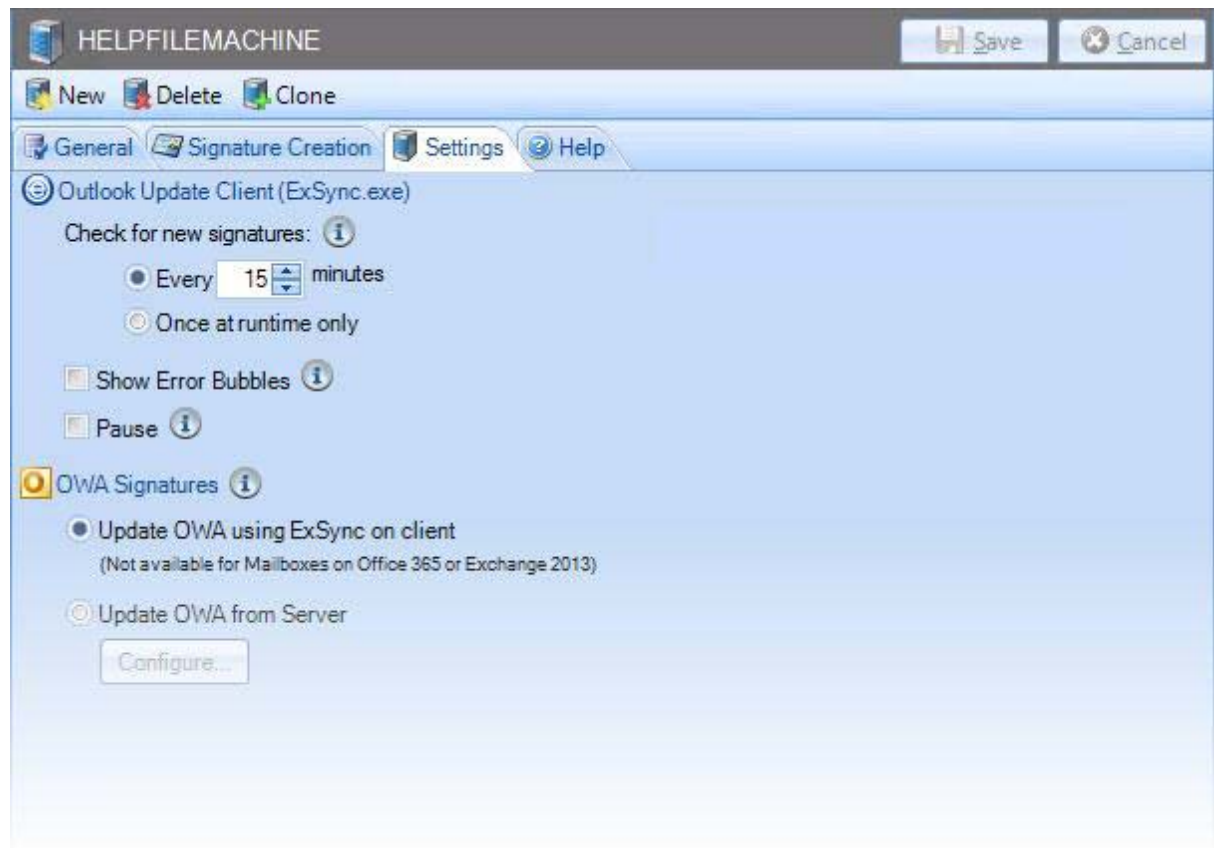
- Set the update mode for ExSync.
- Ensure that ExSync automatically runs on all client computers.

6.2 Setting the update mode for ExSync

Using the Exclaimer Signature Manager Outlook Edition settings, you can set the mode in which Outlook policies are applied to user computers via [ExSync](#).

To set the mode, follow the steps below:

1. Within the Exclaimer console, select the signature deployment policies branch of the console tree.
2. Select the required deployment policy. A default deployment policy is created automatically when Exclaimer Signature Manager Outlook Edition is installed and a deployment share is specified in the [setup wizard](#), but additional deployment policies can also be added.
3. Select the **Settings** tab to view settings for the selected deployment policy:



4. Set the frequency with which ExSync should check for new signatures (in minutes) or choose to update **Once at runtime only**.

If you select **Once at runtime only**, this sets ExSync to update immediately then to close down, whilst defining a set frequency updates at continuous intervals.

5. Save changes.

6.3 Ensuring that ExSync Runs Automatically

Once ExSync has been deployed to client machines, you need to ensure that it runs automatically. To do this, you can use a [logon script](#) or [GPO](#).

6.3.1 Deploying via a Logon Script

This method of deployment is useful if you already have a logon script, or if you wish to deploy Exclaimer Signature Manager Outlook Edition signatures to a select number of users for test purposes.

For clarity, this process has been documented in three stages:

- [Stage 1: Create new or update existing logon.bat](#)
- [Stage 2: Set login.bat as the login script for required users](#)
- [Stage 3: Ask users to log out and log back in](#)

6.3.1.1 Stage 1: Create New or Update Existing Logon.Bat

If you do not already have a logon.bat file, you should create one now.

To create a logon.bat file:

1. Open Windows Notepad.
2. Create a file named logon.bat.
3. Enter the full UNC path to ExSync, for example: `\\Server\Share\exsync.exe`.
4. Save the logon.bat file.
5. Copy the logon.bat file to your shared **NETLOGON** folder.

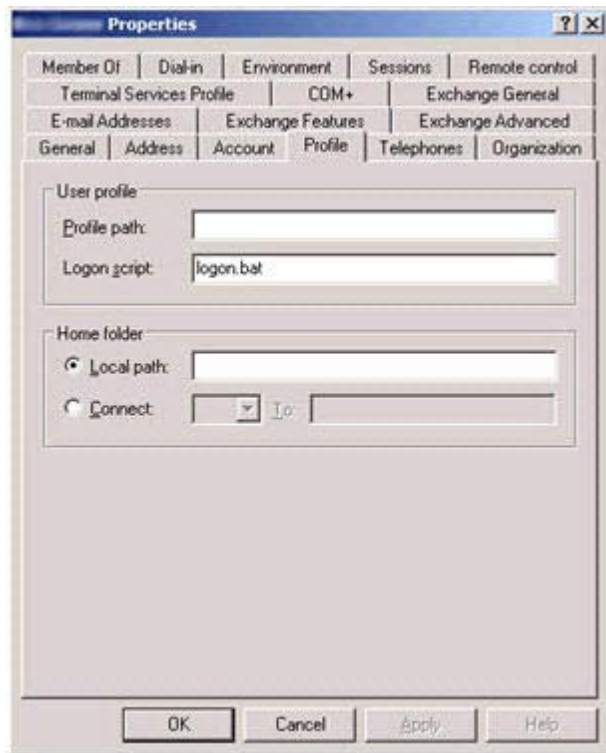
NOTE: If you already have a logon.bat file, simply add the full UNC path to ExSync to it (for example: `\\Server\Share\exsync.exe`) and save it to your shared **NETLOGON** folder.

6.3.1.2 Stage 2: Set Logon.Bat as the Logon Script for Required Users

If required, you can set logon.bat as the login script for each Active Directory user.

To set logon.bat as the login script:

1. Open Microsoft's Active Directory management tool, Active Directory Users and Computers.
2. Locate the required user (in the directory structure).
3. Double-click the username, or right-click and select properties:



4. Select the appropriate tab, in this case it's **Profile**.
5. In **Logon script**, enter logon.bat then click **OK**.

6.3.1.3 Stage 3: Ask Users to Log Out and Log Back In

Ensure that your users log off and log back on at least once to activate the new login script.

6.3.2 Deploying via Group Policy Object (GPO)

This method of deployment allows you to deploy the login script using your default Group Policy Object (GPO) or to a GPO that you have created.

For clarity, this process has been documented in two stages:

- [Stage 1: Create new or update existing logon.bat / logon.vbs](#)
- [Stage 2: Propagate the new GPO](#)

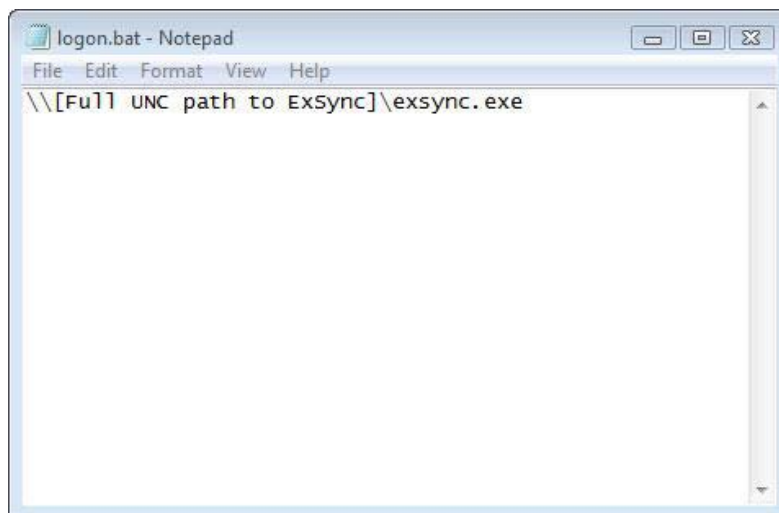
6.3.2.1 Stage 1: Create New or Update Existing Logon.Bat / Logon.VBS

If you do not already have a logon.bat file, or a logon.vbs file you should create one now.

To create a logon.bat file:

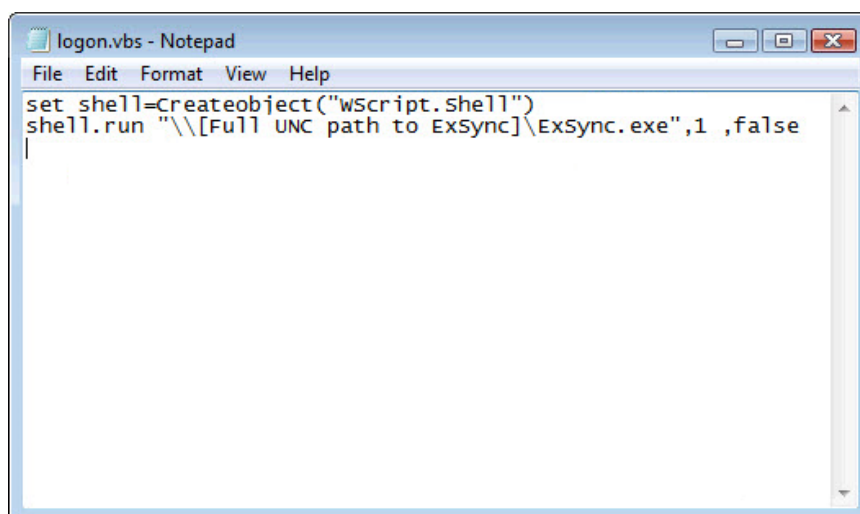
NOTE: The login script needs to be applied to the user configuration of a GPO and not the computer configuration

1. Locate the logon scripts folder of the required GPO (in the Group Policy Object management console).
2. Open the logon.bat or logon.vbs file. If neither of these files is present, you will need to create one.
3. Add the script shown below into the BAT file:



OR

Add the script shown below into the VBS file:



4. Save the logon.bat or logon.vbs file to the logon scripts folder of the GPO (as found in step 1).

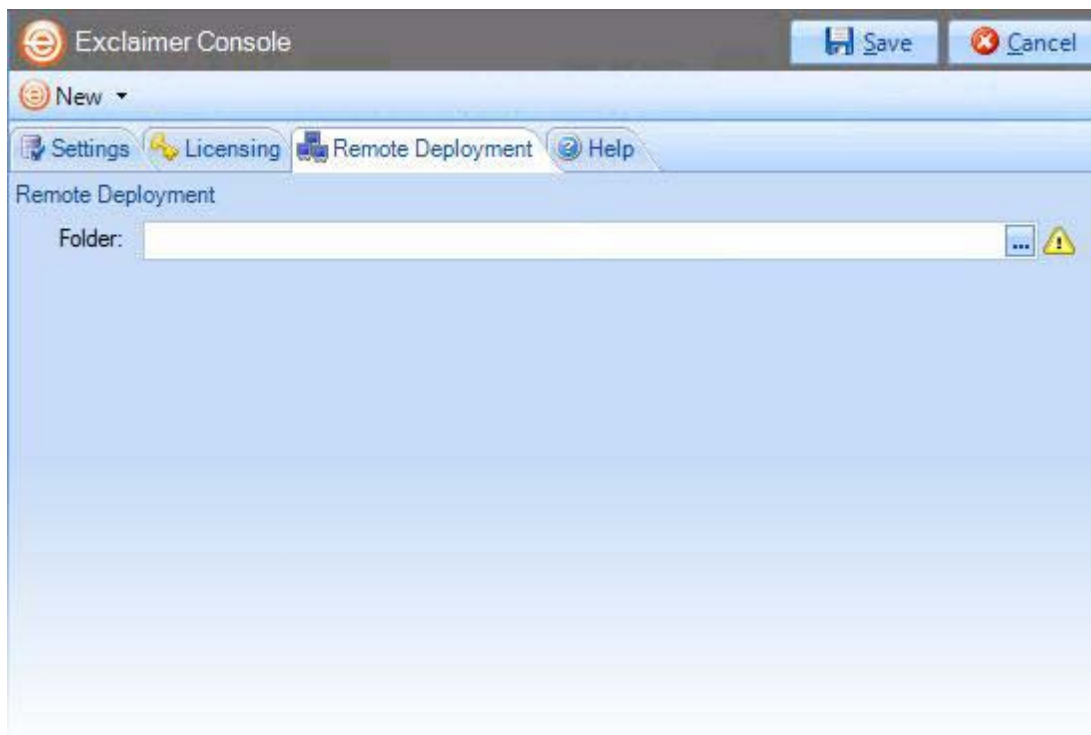
6.3.2.2 Stage 2: Propagate the New GPO

The new GPO is updated for each user when they log off and back on. If you need to propagate the change before this is possible, type gpupdate in the Windows run field on that user's computer.

7 Remote Deployment

If you have multiple Exclaimer installations on your network (for example, you might have servers in different offices around the country), you can manage configuration in a single location and deploy this to all other servers.

To do this, use the **Remote Deployment** tab to specify a shared location:



Then, whenever you save any changes to the configuration, you are asked to confirm if you would like to deploy them to other servers. If you opt to deploy the changes, a file is written to the remote deployment folder and imported by the other installations.

NOTE: Initially, Exclaimer software must be installed on each server. Installation cannot be completed via remote deployment. Once installed, specify a remote deployment folder to manage subsequent configuration changes with remote deployment (each installation must have the same remote deployment folder).

7.1 How it works

The remote deployment folder is defined using the **Remote Deployment** tab within the Exclaimer Console.

The specified folder must be a shared folder on the network (only one remote deployment folder should be used on an entire domain). When configuration changes are saved, the computer (on which those changes have been saved) pushes new configuration data to the remote deployment folder.

Remote machines receive notification from the operating system when new configuration data is detected in the shared folder, and they then pull (that is, import) that data into their local installation. Push and pull operations are completed via the Exclaimer Signature Manager Outlook Edition Remote Deployment service.

7.2 The Remote Deployment folder

Create a shared folder on your network that will be accessible by all machines that are running Exclaimer Signature Manager Outlook Edition.

If you do not want the share to be visible to users, you should use a hidden share. This is done by adding a dollar (\$) symbol to the end of the share name. Hidden shares cannot be viewed when browsing the network with Explorer.

You should ensure that the user who is logged into the Exclaimer console (that is, saving data) has read and write access to this folder.

The following sections detail two methods of applying folder permissions. These are applicable for both the sharing and the NTFS Security permissions of the shared folder (that is, you must make the same permission changes in both the sharing and security tabs of the folder's properties dialog).

7.2.1 Folder Permissions (Easy Method)

Allow the Everyone group to have Read permissions.

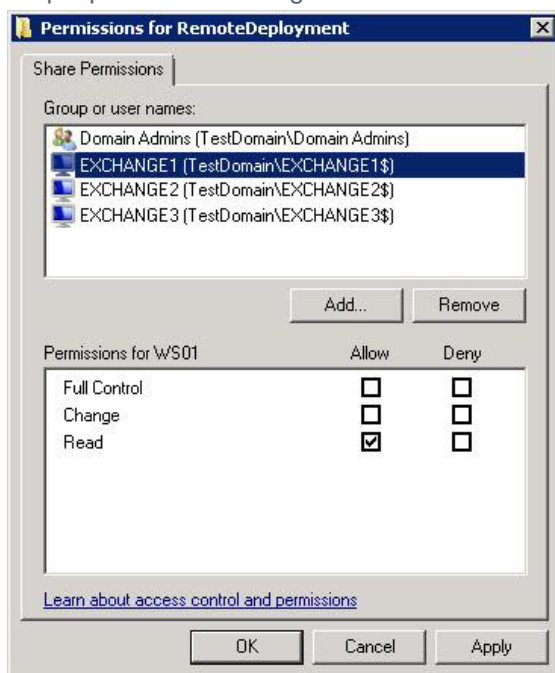
7.2.2 Folder Permissions (Secure Method)

Allow Read permissions only for the computer account of each server with Exclaimer Signature Manager Outlook Edition installed upon it.

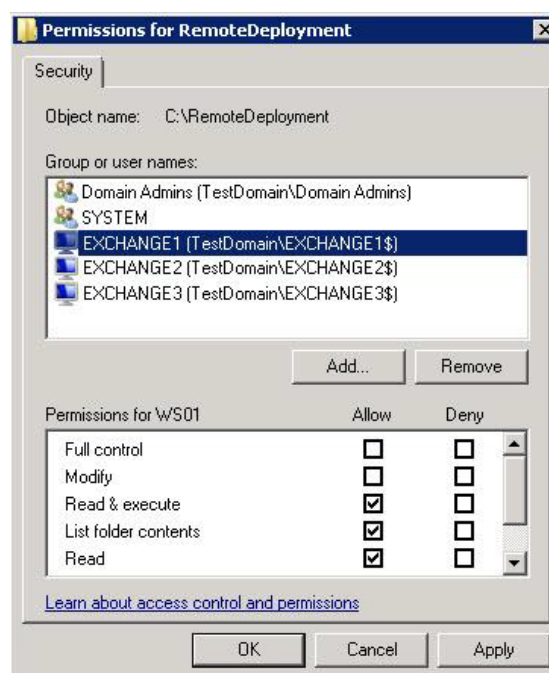
This is essential because the Exclaimer Signature Manager Outlook Edition Remote Deployment service runs under the LocalSystem account; this account (as the name suggests) only has access to the local system of the machine that it is running on - not to any network resources.

The only way this account can ever see a network resource is when the computer account is given specific access to that resource; that is, the folder on the network resource allows itself to be accessed by the LocalSystem account of a specific remote machine. In this case, access is restricted to only reading data from the remote deployment folder.

Example permission settings are shown below:



Share tab



Security tab

7.3 Remote Deployment Timings

As soon as the Exclaimer Signature Manager Outlook Edition Remote Deployment service notices that there has been a change to the remote deployment folder, it starts a timer. Every ten seconds a check is made to see if the file has been written to in the last five seconds. If it has not, the file is added to a queue which will perform the actual import; otherwise the file remains in the timer list.

This means that the import should begin a maximum of ten seconds after the save finishes, though in practice it could be a little more than this depending on server load and how quickly the import thread is given control by the operating system. Similarly, the import could begin sooner, depending on when the save completes relative to the timer interval.

Before checking that configuration changes have been applied successfully on remote machines, sufficient time should be allowed for those machines to actually perform the import (the import can take some time with complex configurations).

7.4 Changing an Existing Remote Deployment Folder

If all Signature Manager Outlook Edition installations are set to point to a specific remote deployment folder and you later decide to change that folder, there is no need to manually change every server to point to the new location.

Having changed the location on one machine and saved the configuration, that machine will write a copy of the configuration data to both the old AND the new locations. Any servers pointing to the old location will import the configuration which includes the new remote deployment folder path so, on subsequent deployments, they will pull data from the new location.

As such, you are advised NOT to delete the old remote deployment folder until enough time has elapsed for all remote machines to import the configuration file that contains the new folder location.

8 Command Line Installation

If you are installing Exclaimer Signature Manager Outlook Edition on multiple servers (for example, at different offices in different locations), you can complete all required configuration on one server, then export that configuration and import it at other locations.

To save time, you can perform a 'silent' installation at other locations, using command line options. A command line installation installs Exclaimer Signature Manager Outlook Edition without the need to go through the [installation wizard](#).

Programs and services are installed and when Exclaimer Signature Manager Outlook Edition is launched, the [setup wizard](#) is launched. You need to go through the setup wizard but once this is done, you can import your original configuration file.

NOTE: For further information about importing and exporting configuration files, please see [How to export/import configuration files of On Premise products..](#)

8.1 Required Preparation

Command line installations are run using an MSI installation, rather than the standard setup.exe.

NOTE: To obtain the required MSI installation file, please contact Exclaimer Support.

8.2 Supported Command Line Options

The following options are supported for a command line installation:

Parameter	Description
INSTALLLOCATION	Where the application should be installed. This corresponds to the Installation Directory screen in the standard installation wizard.

For example:

```
"Signature Manager Outlook Edition Install.msi" /qn INSTALLLOCATION="D:\Program Files\Exclaimer Ltd\Signature Manager Outlook Edition\".
```

Note that environment variables cannot be used in paths - you must specify full paths explicitly.

9 Uninstalling Signature Manager Outlook Edition

The uninstall process removes the following items for Exclaimer Signature Manager Outlook Edition:

- Application program files
- The Exclaimer Outlook Settings Connector Service
- The Exclaimer Signature Manager Outlook Edition Configuration Service
- The Exclaimer Signature Manager Outlook Edition Remote Deployment Service

Configuration files are not removed as part of the uninstall process. The location of these files on your system depends upon which operating system is in use, as summarised below:

Item	Minimum Requirements
Windows Server 2003 x64 Windows Server 2003 R2 x64 Windows Server 2003 x86 Windows Server 2003 R2 x86 Windows XP x86 and x64	\Documents and Settings\All Users\Application Data\Exclaimer Ltd\Signature Manager
Windows Server 2008 x64 Windows Server 2008 R2 x64 Windows Server 2008 x86 Windows Server 2008 R2 x86 Windows Server 2012 Windows Vista x86 and x64 Windows 7 x86 and x64 Windows 8 x86 and x64 Windows Small Business Server 2008 Windows Small Business Server 2011	\ProgramData\Exclaimer Ltd\Signature Manager

9.1 Preparation

As a precaution you may wish to export your configuration before running the uninstall process.

The export includes all settings for Exclaimer Signature Manager Outlook Edition. These are written to an econfig file, a proprietary file type for Exclaimer products.

To export current settings, follow the steps below:

1. Open the Exclaimer Console.
2. Ensure that Exclaimer is selected in the console tree (that is, the topmost branch).
3. Select **Export configuration** from the **Actions** pane, or from the **Action** menu. The **Export Configuration** window is displayed.
4. Navigate to the required drive and folder to which the export file should be saved.
5. Specify the required file name for the export file.

6. Click save to complete the export.

9.2 Running the Uninstall Process

There are two ways to start the uninstall process for Exclaimer Signature Manager Outlook Edition:

- Activate the original setup.exe and choose the uninstall option; then follow the on-screen instructions.
- Use programs and features in Windows Server 2008, Windows Vista, Windows 7, or Windows 8 then follow the on-screen instructions.